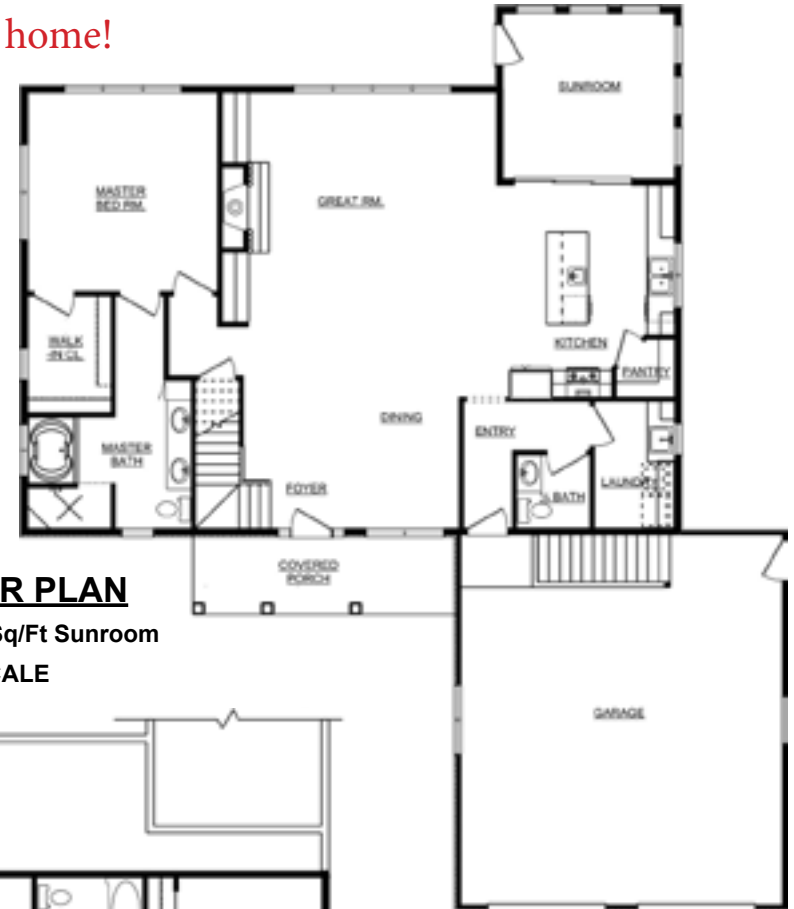


PortSide's Plan of the Month - May 2018



Click the house to take a video tour of this home!



FIRST FLOOR PLAN

1,606 Sq./Ft. w/ 179 Sq/Ft Sunroom

NOT TO SCALE



SECOND FLOOR PLAN

735 Sq/Ft - NOT TO SCALE

- Aging in place features including no-step shower and 30" door frames
- Master bathroom with custom-tiled shower, soaking tub with custom-tiled deck
- Custom maple kitchen cabinets with quartz countertops, extended island snack counter and walk-in pantry
- Great room gas fireplace with cultured stone face and hearth
- Two bedrooms, full bathroom, family room and desk area on second level
- Four season sunroom
- Covered front porch
- Access to basement from garage
- Full size lower level for future living space



The "May 2018" home plan is copyrighted to PortSide Builders, Inc.