

Model Home Now Available

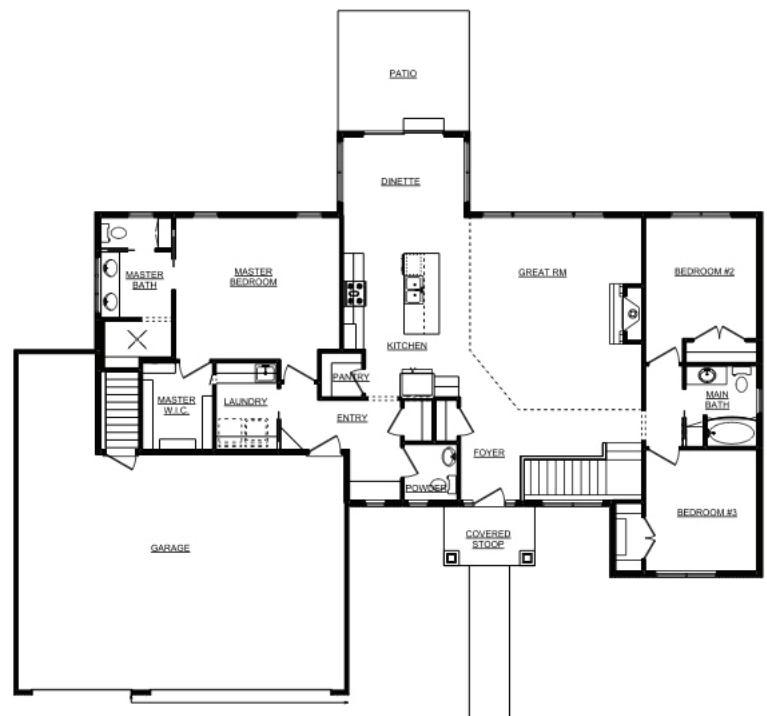
New custom-designed, Ranch Style home, under construction in Bellhaven Estates Subdivision

2051 Bell Heights Court • Oshkosh, Wisconsin 54904



1966 Sq/Ft • 3 Bedroom • 2.5 Bathrooms

- Aging in place features and open concept design encompassing the kitchen, great room, and dinette
- Kitchen with custom maple cabinets, walk-in pantry, and extended island snack counter with quartz top
- Gas fireplace with veneer stone face and raised hearth
- Master bath with dual sinks, granite countertops, and custom tiled, curbless walk-in shower
- Spacious laundry room with drop in sink
- Cultured stone and vinyl exterior with covered porch
- 3 stall garage with direct stairway to basement
- Full unfinished basement with look-out windows and rough-plumbing for future finish



For more information, or to take a tour of this home during the construction process, contact us at 920-727-4874 or 920-426-1544

www.portsidebuilders.com

