



PortSide's Plan of the Month - Harbor Maple

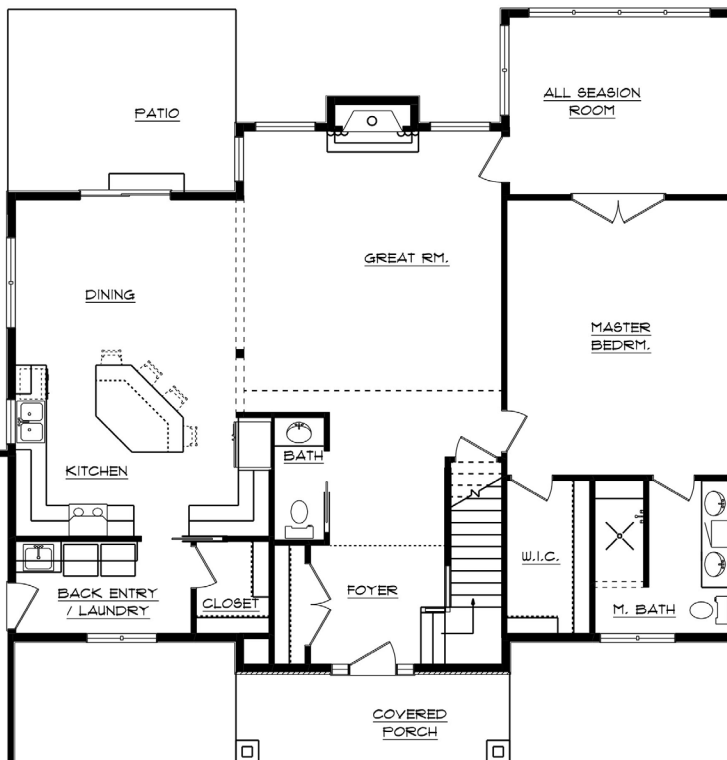
2,684 Total Sq. Ft. ~ 1.5 Story ~ 3 Bedrooms

2.5 Bathrooms ~ Open concept design

Grand two-story great room with gas fireplace

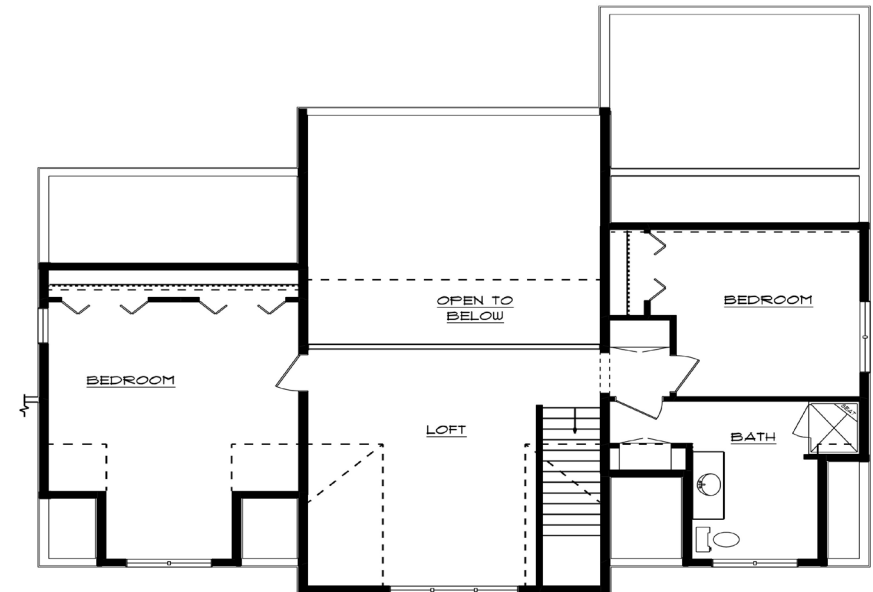
All-season sun room with oversized windows

Dual sinks and walk-in custom tiled shower in master bath



FIRST FLOOR PLAN

1,729 SQ. FT. - NOT TO SCALE



SECOND FLOOR PLAN

955 SQ. FT. - NOT TO SCALE