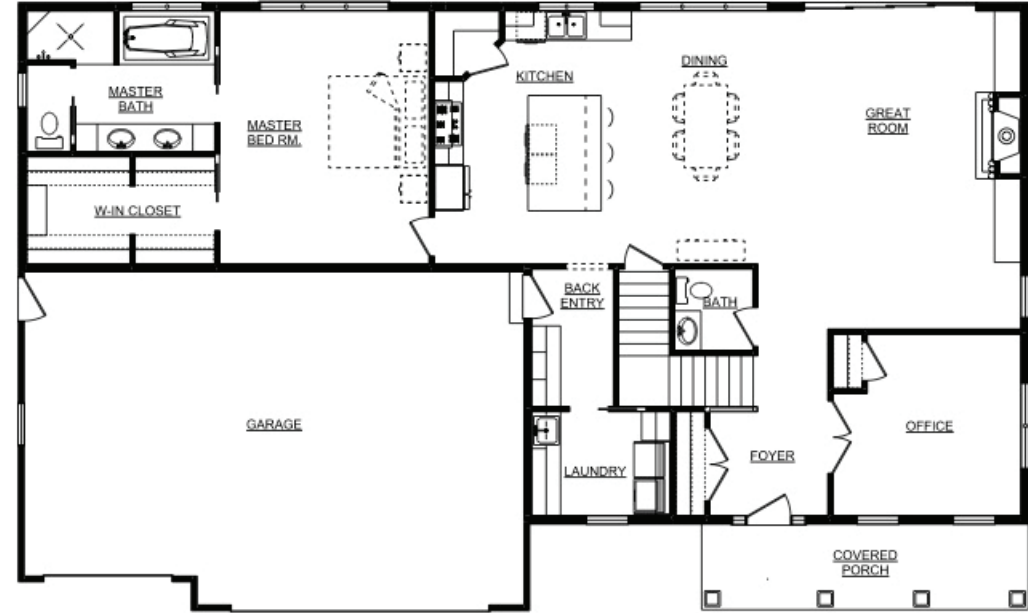


The "November 2017" home plan is copyrighted to PortSide Builders, Inc.

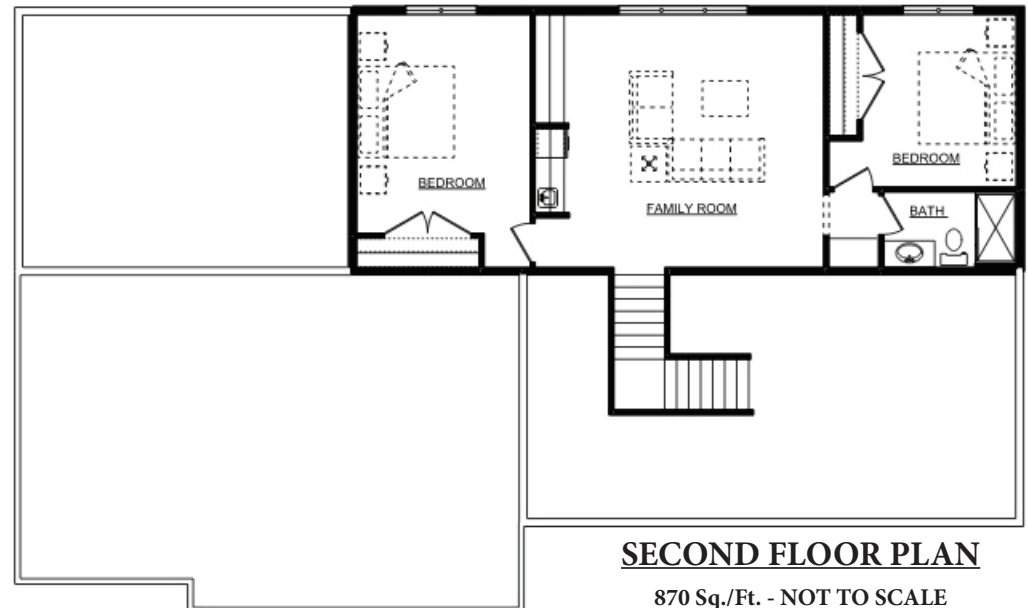


- 2,781 Total Sq./Ft. • 3 bedrooms • 2.5 bathrooms
- Ranch style home
- Volume ceilings
- Office/optional bedroom
- Sun tunnel in upstairs bathroom
- Stone gas fireplace with custom cabinets on both sides
- Master bath with dual sinks, granite countertops, custom-tiled shower and whirlpool tub
- Custom maple kitchen cabinetry, granite countertops, corner walk-in pantry, and extended island snack bar
- Family room with kitchenette on second floor



FIRST FLOOR PLAN

1,911 Sq./Ft. - NOT TO SCALE



SECOND FLOOR PLAN

870 Sq./Ft. - NOT TO SCALE