

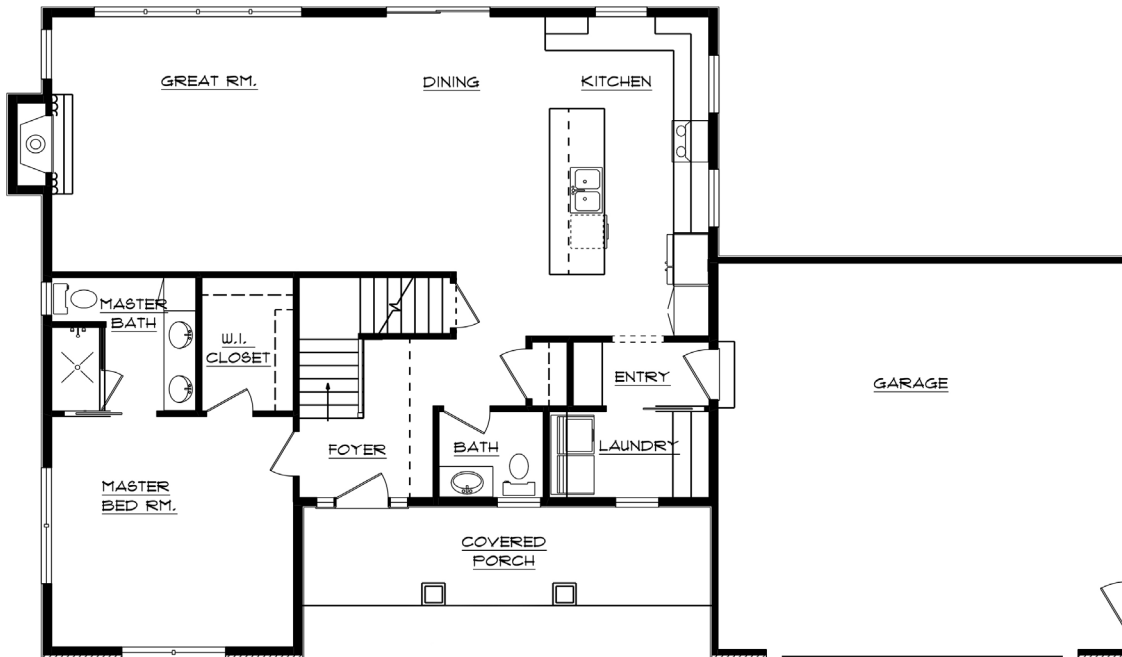


# PortSide's Plan of the Month - St. Croix Maple

1,948 Total Sq. Ft. ~ 1.5 Story ~ 3 Bedrooms

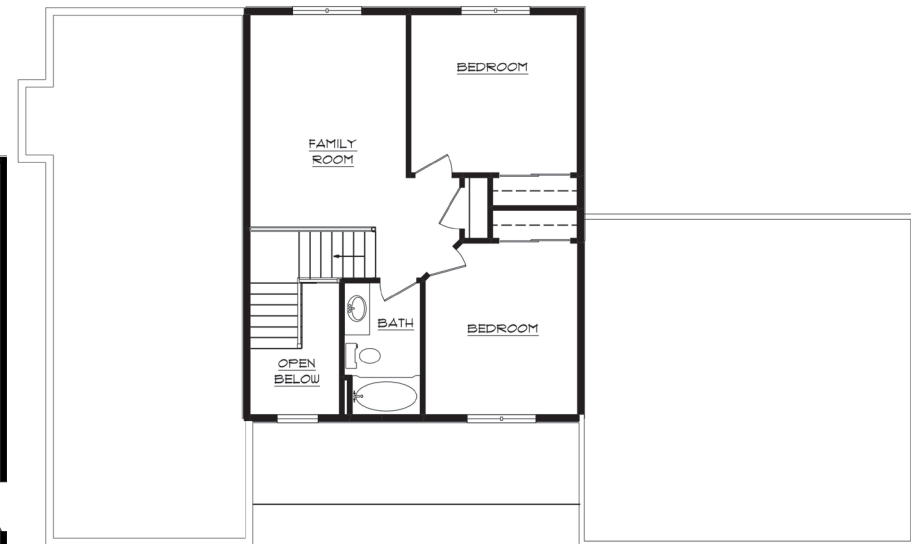
2.5 Bathrooms ~ Open concept in main living area

Spacious kitchen with custom cabinets, island with sink, and extended snack counter



**FIRST FLOOR PLAN**

1,317 SQ. FT. - NOT TO SCALE



**SECOND FLOOR PLAN**

631 SQ. FT. - NOT TO SCALE