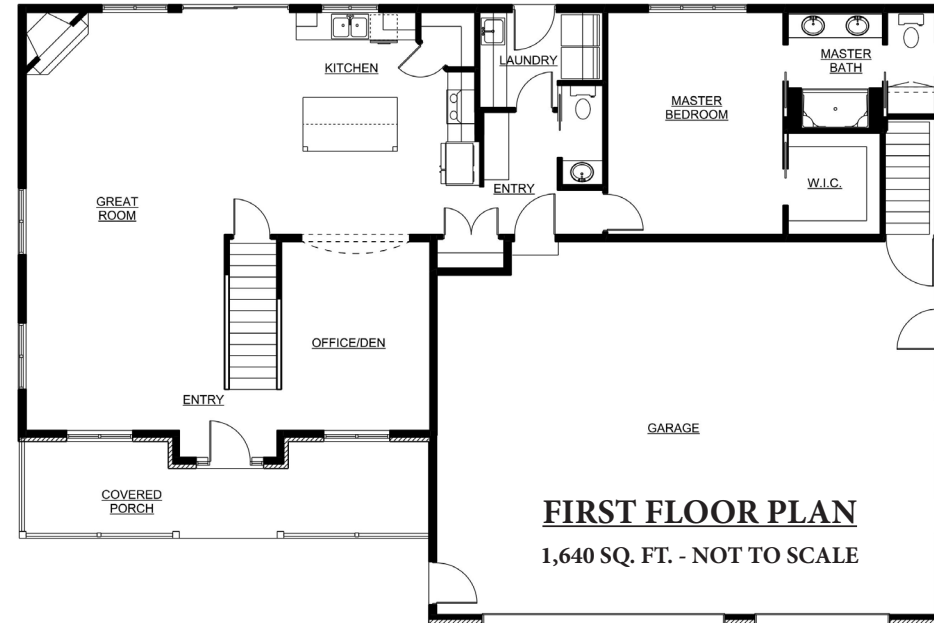


# PortSide's Plan of the Month - August 2017

*The "August 2017" home plan is copyrighted to PortSide Builders,*



- 2,216 Total Sq. Ft. • Craftsman style home
- 3 Bedrooms • 2.5 Bathrooms • 1.5 story
- Custom cabinetry
- Extended island snack counter
- Master bath with dual vanities and quartz countertops
- Corner gas fireplace
- Dining room with radius entry
- Brick, cedar shake and vinyl exterior

