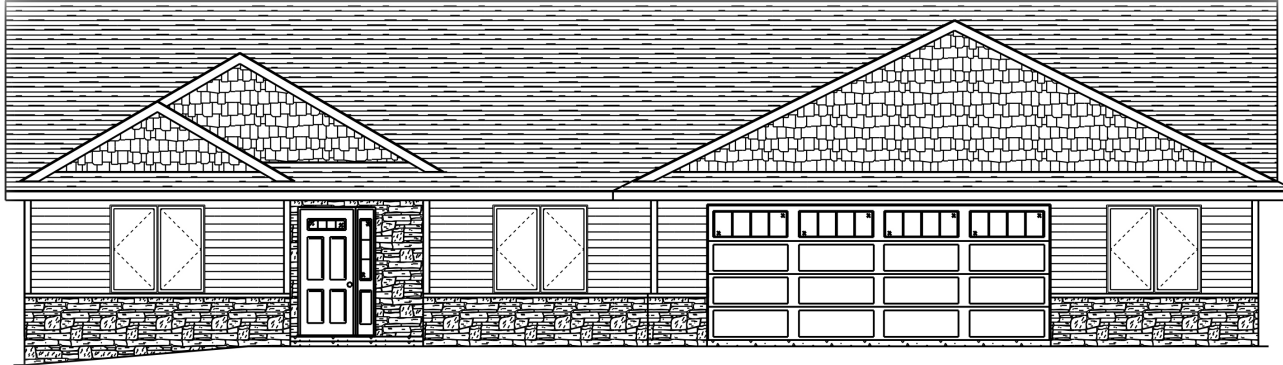


*The "September 2017" home plan is copyrighted to PortSide Builders,*



## FIRST FLOOR PLAN

1,997 SQ. FT. - NOT TO SCALE

- 1,997 Total Sq. Ft. • Aging in Place Design
- 3 Bedrooms • 3 Bathrooms • Single Story
- Zero entry from garage • No step front entry
- No curb showers in master, and one guest bath
- Luxury vinyl flooring throughout the home
- Wider traffic areas in kitchen and hallways
- Spacious walk-in closet in master suite
- Three season room • Den / Office
- Laundry Room with utility sink

